

Brent Anti Apartheid Movement

MESSAGE TO TRADE UNIONISTS

This brochure is produced by the Brent branch of the Anti Apartheid Movement. It is part of a national campaign to inform trades union members about the terrible conditions of life and denial of human rights faced by our brothers and sisters under the apartheid regime in South Africa.

On December 1st, 1985, the majority of legal unions in South Africa came together to form the *Congress of South African Trades Unions* (COSATU). All the trades unions affiliated to COSATU are non-racial and open to white as well as black workers. The new union federation is committed to building "a united, democratic South Africa, free of oppression and economic exploitation".

As this brochure shows, South African workers have a long way to go before achieving this goal. The apartheid regime, supported by Thatcher and by the British based multinationals, continues to trample over the most basic human rights of black South African workers. Despite the abolition of the *pass laws*, black workers are still prevented from voting in national elections and are unable to choose where to live.

For these reasons COSATU leaders have supported the call for international economic sanctions against the apartheid regime. Dozens of workers are dying each week in their efforts to build a free South Africa. They desperately need our solidarity. Workers in Britain have a special responsibility. It is Britain which harbours many of the profiteers of the apartheid system.

Many national trades unions in Britain are already affiliated to the Anti Apartheid Movement. But we need this support to be shown in every local area. We hope, therefore, that after reading this brochure, you will pledge your trades union branch and/or shop stewards committee to affiliate to the Brent Anti Apartheid Movement. You can also join as an individual member. For details on how to affiliate or join, see overleaf.

The Anti Apartheid Movement now has 35 affiliated trade unions — check that yours is among them: AUEW, AUEW-TASS, ACTT, ASLEF, APEX, ASTMS, BFAWU, BETA, COHSE, CPSA, CSU, FBV, FTATU, GMBATU, IRSF, IPCS, MU, NALGO, NATFHE, NCU, NGA, NUM, NUPE, NUR, NUS, NUTGW, NUT, SCPS, SOGAT '82, STE, TWU, TGWU, UCW, UCATT, USDW.

DID YOU KNOW?

- there is no minimum working week in South Africa
- strike funds are illegal and union rules can be changed by the government
- South African employers have the right to break up trades union meetings
- the average wage of black miners in South Africa is just one sixth of white miners
- under the Internal Security Act trades unionists are subject to lengthy periods of imprisonment without charge or trial
- there is no jury system in South Africa
- under South African law black miners are prevented from occupying higher grade jobs



AFFILIATE TO THE BRENT BRANCH OF ANTI APARTHEID

By affiliating to Brent Anti Apartheid you can:

- receive regular news about the situation in South Africa
- send representatives along to our regular meetings
- receive copies of the national newspaper of the Anti Apartheid Movement

Brent A.A. can also provide speakers, videos, visual displays and has a variety of easy to read literature on all aspects of life in South Africa.

To affiliate or arrange a speaker at your meeting, fill in the form below and send to: Brent A.A., c/o 20 Clifford Gardens, London NW10.

*We would like to have a speaker from Anti Apartheid

*We wish to affiliate to Brent Anti Apartheid

SECRETARY'S NAME

NAME OF ORGANISATION

ADDRESS

.....

TELEPHONE NUMBER

**Tick as appropriate.*

WORKING AGAINST APARTHEID

Every aspect of life in South Africa is conditioned by the racist policies of the government and the state.

CHILD LABOUR

There are approximately 28 million black people in South Africa. Of these, only 8 million, at most, are employed — not including child labour used in the back-breaking work of picking crops for wealthy white farmers.

Virtually all black labour is made up of “migrant” workers. Under this system, workers are hired for 6 or 9 month contracts. When these contracts expire the workers are totally at the mercy of the employers and can be sent back to the *Bantu* reservations.

So, even without the pass laws, workers have no residential rights in the cities.

TOWNSHIPS

Whilst under contract, workers are forced to live in the outlying townships. Commuting between these shanty-town dwellings and their place of work, adds many extra hours to the working day. It can mean getting up at two or three in the morning and not returning from work until five in the afternoon.

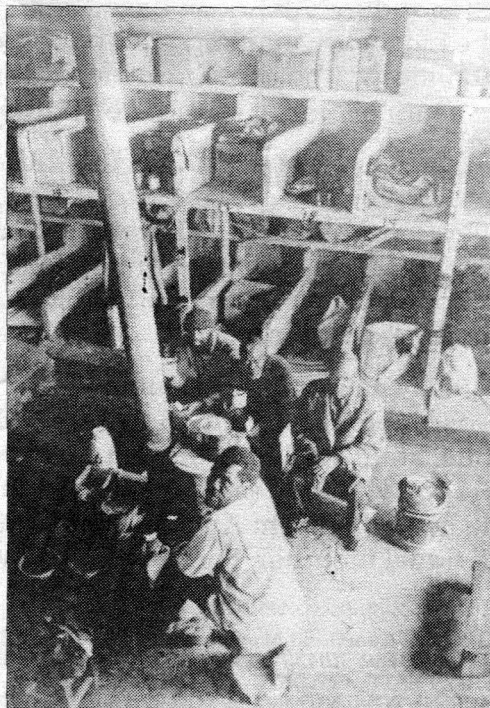
The townships themselves lack the basic amenities such as lighting and plumbing. It is illegal for workers to have their families living with them in

the townships.

HOUSING

Most miners, for example, are “housed” in single-sex labour camps consisting of overcrowded shacks. The sleeping facilities in these shacks are barbaric. Like animal pens, they are made up of 2 or 3 dozen thinly divided cement bunks attached to the walls of the hut.

The compounds themselves are organised like concentration camps. They are often surrounded by wire with armed look out positions. Inside, the huts are marked and divided according to tribal or language differences.



Sleeping quarters for black workers

Brent Anti Apartheid



membership form

I wish to become a member of Brent A.A. Signed
and enclose £2/£1* for my annual membership.

Name Address

..... Tel No.

(*The two rates are for waged and unwaged respectively)
Please return this form to: Brent A.A., c/o 20 Clifford Gardens, London NW10.
Monies payable to: Brent A.A.